

SEMAPHORE

a CSE-Global Group Company

Semaphore – SCADA and RTU Systems

Semaphore offers the first IP-based RTU solutions that enable the complete integration of SCADA system, control, and communications functionality in one rugged package. Our capability to leverage easy-to-use Web technologies and inexpensive public networks offers:

- Up to 50% less total installed cost per point versus traditional SCADA / PLC systems
 - Greater organizational access to data through automated reporting and browser software
 - Fast implementation and start-up with minimal training and engineering costs
 - Easy integration with video and third-party devices
- Semaphore is the RTU of choice for those desiring flexible, proven standard or Internet-based technology with minimal project delays and risk.*

CSE-Semaphore's Ethernet RTU – T-BOX LT "Lite"

CSE-Semaphore's Ethernet RTU – T-BOX LT "Lite" adds Ethernet 10/100 Base T communications and a variety of I/O selections to the line. In addition to Ethernet, T-BOX LT includes an RS 232 port, RS 485 port and a choice of PSTN modem or wireless communications devices. T-BOX LT offers a choice of I/O counts, which are optimized for applications such as building / energy management (LT200), heating systems (LT201) and transportation systems (LT300). T-BOX LT is available in the standard, DIN rail-mounting package as well as variety of enclosure solutions.



T-BOX Lite keeps network traffic to a minimum while reducing the infrastructure and overhead costs associated with traditional RTU networks.

CSE-Semaphore's Wireless Monitor – T-BOX WM

CSE-Semaphore's Wireless Monitor – T-BOX WM extends advanced monitoring, automation and telemetry capabilities to processes requiring as few as one or two measurements. Designed for locations which lack a power source, intelligent power management allows T-BOX WM to operate using a small lithium battery. This ready-to-install solution is available in a variety of enclosures, including DIN rail-mount and the IP66 weatherproof housing as shown, with internal single or dual lithium battery, and a wireless communications device or PSTN modem. Wireless options include GSM cellular, CDMA cellular and spread spectrum radio. A variety of optional sensors for level or pressure completes the solution.

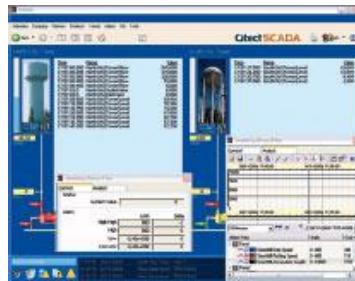


The fully integrated, IP66 weatherproof housing is available in carbon or stainless steel. This ready-to-install solution includes single or redundant lithium batteries, PSTN or wireless communication device, I/O for end device interfacing, and optional liquid crystal display

Semaphore SCADA and RTU Systems DA and RTU Systems

CSE-Semaphore's T-BOX RTU is the first, IP-based telemetry solution that enables the complete integration of SCADA, control, and communications functionality in one rugged package. It leverages easy-to-use Web technologies and inexpensive public networks for decentralized, monitoring and control systems. T-BOX products offer up to 50% less total installed cost per point versus traditional SCADA/ PLC systems and permit greater organizational access to data through automated reporting and browser software.

Semaphore SCADA systems provide fast implementation and start-up with minimal training and engineering costs, plus easy integration with a vast range of third-party devices. They're the products of choice for those desiring flexible, proven standard or Internet-based technology with minimal project delays and risk.



T-BOX solutions are open to virtually all SCADA software solutions

Davis Controls Limited
2200 Bristol Circle, Oakville, Ontario, L6H 5R3
1-800-701-7460
[Email Us](#)